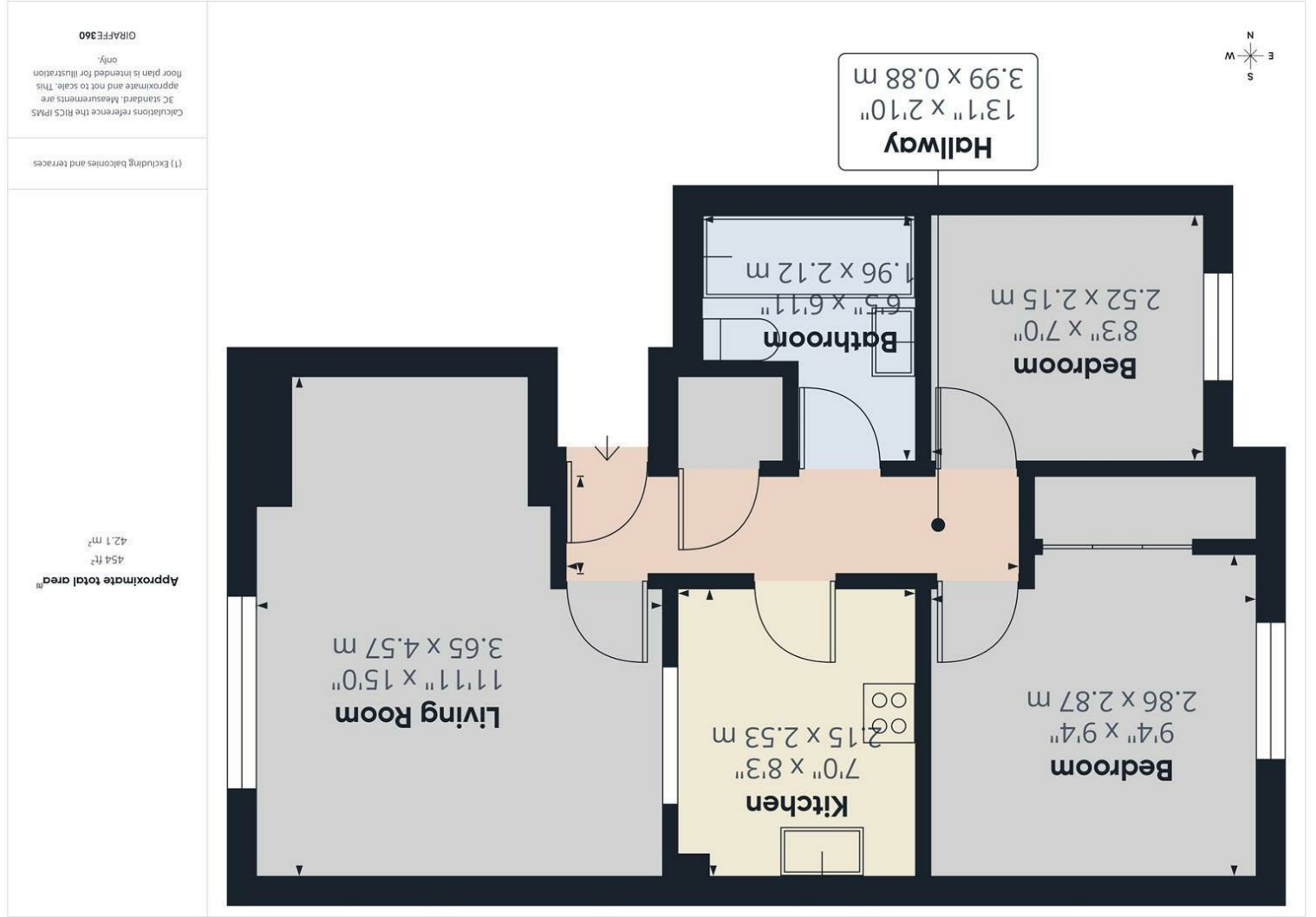


Consumer Protection from Unfair Trading Regulations 2008 We have not tested any apparatus, equipment, fittings or services and so cannot verify that they are in working order or fit for purpose. You are advised to obtain verification from your solicitor or surveyor. References to the tenure of a property are based on information supplied by the seller. We have not had sight of the title documents and a buyer is advised to obtain verification from their solicitor. Items shown in photographs are not included unless specifically mentioned within the sales particulars, but may be available by separate negotiation. We advise you to book an appointment to view before embarking on any journey to see a property, and check its availability.



Hallway 13'1" x 2'10" (3.99 x 0.88)

Living Room 11'11" x 14'11" (3.65 x 4.57)

Kitchen 7'0" x 8'3" (2.15 x 2.53)

Bedroom 8'3" x 7'0" (2.52 x 2.15)

Bedroom 9'4" x 9'4" (2.86 x 2.87)

Bedroom 2'86" x 2'15"

Bathroom 6'5" x 6'11" (1.96 x 2.12)

Lease - 190 years from 01 January 1989

Management Charge - £1293.27

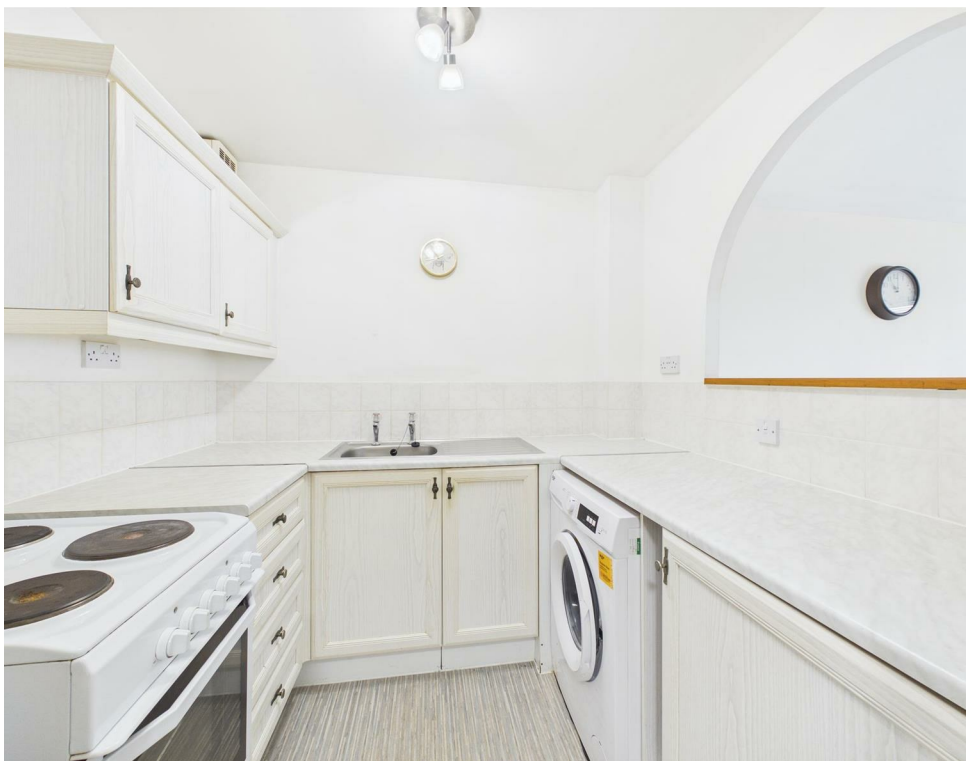


- Lounge/diner
- Kitchen
- Bedroom with fitted wardrobe
- Bathroom
- Electric heating
- Allocated parking space
- No onward chain!

173 Great Meadow Road, Bradley Stoke, Bristol, BS32 8DG

£200,000 Leasehold

PROPERTY TYPE Flat
BEDROOMS 2
RECEPTION ROOMS 1
BATHROOMS 1
EPC RATING B
COUNCIL TAX BAND A



Well presented, two bedroom first floor flat in popular residential location with easy access to The Mall at Cribbs Causeway, Parkway train station, and M4/M5 motorway network.

With accommodation comprising lounge/diner, kitchen and bathroom. The bedroom has the benefit of a fitted wardrobe.

Electric heating and an allocated parking space.

Offered with no onward chain - viewing advised!

PLEASE NOTE THE VENDOR IS CURRENTLY RENEWING THE LEASE THE TERM WILL BE 190 YEARS FROM 1989 - THE UNEXPIRED LEASE WILL THEREFORE BE 153 YEARS.



the location

Offering excellent access to M4/M5 motorway networks, within easy reach of the Mall at Cribbs Causeway and good local amenities nearby. Bristol 7.4 miles Bath 16.6 miles

Offered for sale with no onward chain!

just a thought...

If you hadn't considered this area before this could be the one! Well placed ready to move into, and with an allocated parking space. Viewing advised!